





BEFORE USING THIS PRODUCT, READ, UNDERSTAND, AND FOLLOW THESE INSTRUCTIONS.

Save these instructions for future reference.

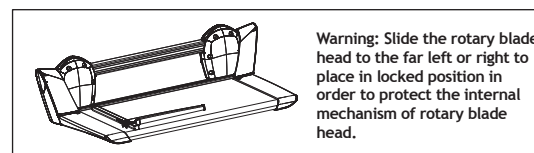
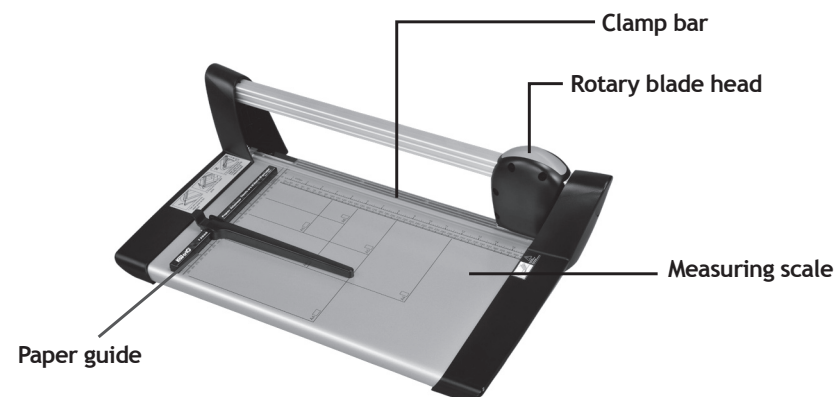
FOR INDOOR USE ONLY

IMPORTANT SAFEGUARDS

- **Read all instructions before using.**
 - This product is not intended for use by children. Keep product out of the reach of children and pets.
 - This product is intended for use in trimming paper. Do not use the product for any other purpose.
 - Keep loose items (e.g., hands, fingers, jewelry, clothing, neckties, etc.) away from the blade to avoid personal injury or damage to the product.
-  To avoid damage to the product
 - Remove paper clips and staples from items before trimming paper.
 - Never lubricate the cutting blade.
 - Do not expose product to water or other liquids.
-  To avoid possible severe personal injury
 - Never operate the trimmer without the blade guard in place
 - Never carry the trimmer by the blade.
 - Never carry the trimmer by the cutting handle.
 - Always ensure the blade lock is secure when the product is not in use.
- Do not attempt to dislodge jammed debris with a pointed object, as personal injury or product damage may occur.
- Always operate the product on a flat, level, steady surface to avoid it overturning.
- Do not hang or wall-mount the product.
- This product is intended for indoor use only. Do not use outdoors.

SAVE THESE INSTRUCTIONS FOR FUTURE REFERENCE

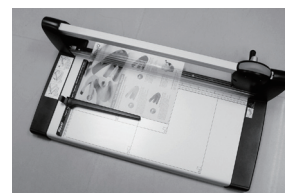
Components description



Model/Specifications	13060	13061
Cutting Length (mm)	390	500
Cutting Height (mm)	3.0	3.0
Format Index	A6-A4	A6-A3
Table Size (WxD)(mm)	310x446	312x556
Dimensions (WxDxH)(mm)	352x632x172	352x740x172



How to use it



1. Put the stack of paper under the clamp bar and adjust the paper guide to the proper position. Can be removed for larger applications.

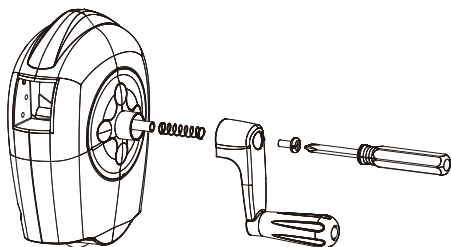


2. Press and slide rotary blade head to cut the stack of paper.



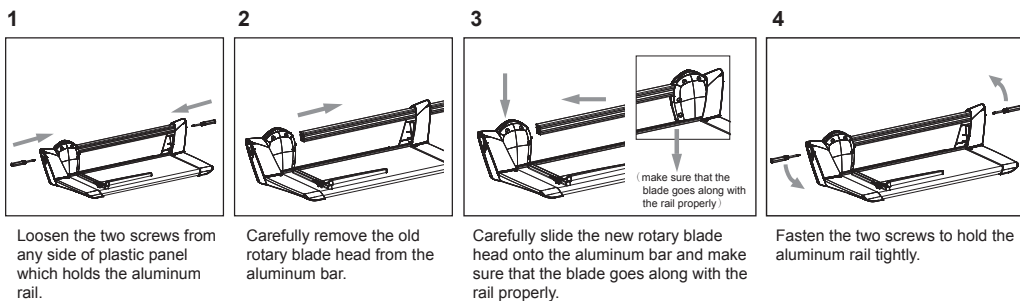
3. Push in and rotate the handle to cut 20 to 30 sheets of copy paper easily.

Installation of hand wheel



1. Take out the handle, spring and screw driver provided in the box.
2. Put the spring on the axle of rotary blade head in advance and put the handle on the axle to hold the spring. And then fasten the screw tightly. Please refer to the photo below:

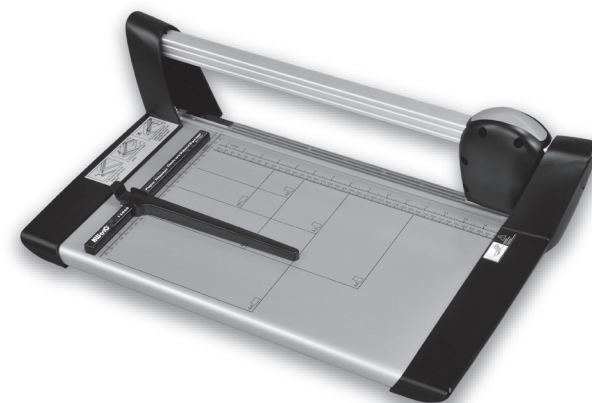
How to replace rotary blade head



Care and Maintenance

CAUTION: To avoid damaging the product, never immerse the product in water or other liquids.

Do not use abrasive cleaners on the product. Dust with a soft cloth using extreme caution around the blade.



ROTARY TRIMMERS

Operating Instructions